

Compass Points 2023



**Minnesota
Compass**

Minnesota Compass looks at key measures in a number of topic areas to help policymakers and nonprofit, business, and community leaders identify, understand, and act on issues that affect lives and communities.

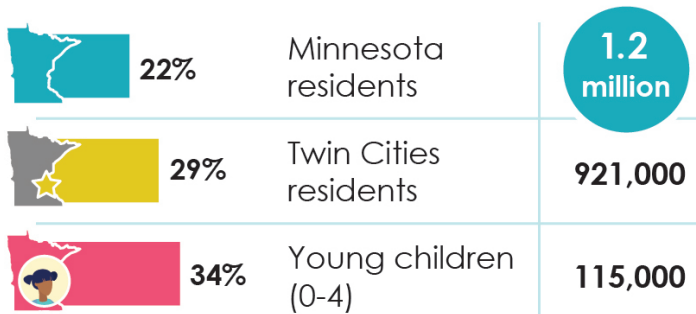
HOW RACIALLY AND ETHNICALLY DIVERSE IS OUR STATE?

Our mncompass.org web analytics show that users are visiting key sections to learn more about the racial and ethnic makeup of Minnesota's population. Our data by race and ethnicity, by immigrant group, and by cultural community can help paint a clearer picture of who we are as a population, where we live and work, and what is impacting our quality of life. Here is a snapshot of facts about some of the people who make Minnesota their home.

Race and ethnicity





Minnesota's population is becoming more racially and ethnically diverse, especially among our younger age groups.

Black, Indigenous, and people of color (BIPOC) make up:



Immigrant group

Immigrants contribute to the growth of the state's economy and population.

-  About **8%** of the state's population is foreign born.
-  **75%** of foreign-born residents are working.
-  **20%** of kids in Minnesota are children with an immigrant parent.
-  Mexican immigrants are Minnesota's largest immigrant group.

Cultural community

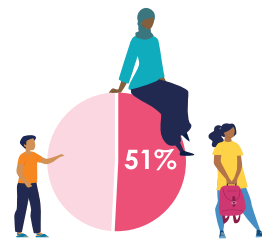
Minnesota is home to many cultures, and our demographic profiles on 27 of the largest cultural communities provide insight into our quality of life.



More than 9 in 10 Hmong Minnesotans live in the 7-county Twin Cities metro area.



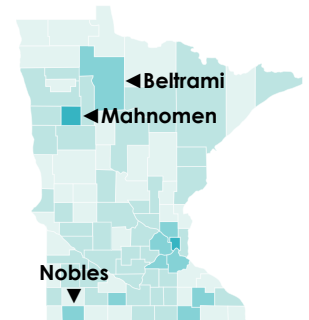
Nearly 4 in 10 Mexican Minnesotans live outside of the 7-county Twin Cities metro area.



More than half of Somali residents are age 17 and younger.

Three of the five most racially and ethnically diverse counties in Minnesota are in greater Minnesota.

- Mahnomen: 63%
- Nobles: 59%
- Beltrami: 46%



Percentage denotes probability two people selected at random would be from different racial and ethnic groups.



MINNESOTA'S POPULATION AT A GLANCE

	2000	2021		2000	2021
Overall population	4.9 million	5.7 million	Older adults (age 65+)	594,000	956,000
Twin Cities (7-county metro)	2.6 million	3.2 million	Twin Cities	255,000	472,000
Greater Minnesota	2.3 million	2.6 million	Greater Minnesota	339,000	483,000
Children and youth (age 0-17)	1.3 million	1.3 million	Foreign-born residents	260,000	487,000
Twin Cities	698,000	730,000	Twin Cities	206,000	387,000
Greater Minnesota	589,000	587,000	Greater Minnesota	54,000	101,000
Working-age residents (age 18-64)	3.0 million	3.4 million	People of color	582,000	1.2 million
Twin Cities	1.7 million	2.0 million	Twin Cities	444,000	921,000
Greater Minnesota	1.3 million	1.5 million	Greater Minnesota	138,000	328,000

Numbers may not add up to totals due to rounding.

MINNESOTA'S QUALITY OF LIFE INDICATORS

	CURRENT	RECENT TREND	NATIONAL RANK (1=BEST)
ARTS & CULTURE	57% Adults age 18+ who attended a cultural event in the past year	SAME	8
	40% Adults age 18+ who created or performed art in the past year	SAME	17
	20% Students participating in artistic lessons at least once a week	WORSE	--
CHILDREN & YOUTH	58% Students who are connected to a caring adult	WORSE	--
	60% Students participating in enrichment activities 3 times a week	WORSE	--
CIVIC ENGAGEMENT	61% Voted in 2022 mid-term election (voting-eligible)	SAME	3
	37% Residents age 16+ who volunteer	WORSE	5
	63% Adult neighbors who help neighbors	SAME	6
EARLY CHILDHOOD	59% Children screened before age 5	WORSE	--
	7% Low-weight births	WORSE	12
ECONOMY	\$61,000 Per-capita GDP (2012 chained dollars)	BETTER	15
	2.8 million Number of jobs	WORSE	20
	\$77,700 Median household income (2021 dollars)	BETTER	13
	9% Poverty rate	BETTER	3



	CURRENT	RECENT TREND	NATIONAL RANK (1=BEST)
EDUCATION	48% 3rd-graders who are proficient in reading	WORSE	--
	40% 8th-graders who are proficient in math	WORSE	--
	83% Students who graduate high school on time	SAME	32
ENVIRONMENT	63% Days air quality was rated "good" (Twin Cities)	WORSE	9*
	29 Tons of greenhouse gas emissions per person	BETTER	--
HEALTH	32% Adults age 18+ who are obese	WORSE	20
	5% Residents under age 65 who are uninsured	SAME	5
	9% Adults age 18+ with diabetes	SAME	10
HOUSING	11,371 People experiencing homelessness	WORSE	--
	26% Households who pay 30% or more of income for housing	SAME	12
	26% Homeownership gap (white, of color)	BETTER	38
PUBLIC SAFETY	24 Serious crimes committed per 1,000 residents	WORSE	--
	431 Traffic injuries and fatalities per 100,000 residents	BETTER	6**
TRANSPORTATION	4% Highway miles rated in poor condition	SAME	--
	18% Household income spent on transportation (Twin Cities)	SAME	8*
	32 Annual hours of delay per auto commuter (Twin Cities)	BETTER	12*
	18,400 Average number of jobs reachable within a 30-minute commute by foot or transit (Twin Cities)	SAME	11*
WORKFORCE	78% Proportion of adults working	WORSE	2
	39% Adults age 25+ with a bachelor's degree	BETTER	11
	68% Graduation rate at 4-year institutions (within 6 years)	BETTER	14
	56% Graduation + transfer rate at 2-year institutions (within 3 years)	SAME	10

* 25 LARGEST U.S. METROS

** RANKING FOR FATALITIES ONLY

LEARN MORE ABOUT MINNESOTA'S POPULATION
AND QUALITY OF LIFE TOPICS AT [MNCOMPASS.ORG](https://mncompass.org)



2022 HIGHLIGHTS:



DATA FOR EQUITY LANDING PAGE

Minnesota Compass analytics showed four webpages rise to the top in page views every month: race and ethnicity demographics, data by immigrant group, data by cultural community, and the racial equity resource directory. To help make it easier for users to reach these and similar pages, Minnesota Compass developed a landing page with links to all these webpages, plus curated lists of diversity, equity and inclusion resources, data analysis, and tutorials on how to find and use data to tell a compelling story.

mncompass.org/data-for-equity

DIVERSITY INDEX

Our new county diversity index answers the question "How different am I from my neighbors?" Minnesota Compass pulled Minnesota county data from the U.S. Census Bureau's diversity index, which measures how probable two residents of an area chosen at random will be of different racial and ethnic identities. This gives us a better picture of diversity throughout the state.

mncompass.org/diversity-index

[Read our Insights article about how the index is a more accurate measure of diversity in a location.](#)



DATA ABOUT AND FOR CULTURAL COMMUNITIES

If you visit the Hmong American Partnership (HAP) website, you'll see "Community Demographics" on its menu. HAP uses this Minnesota Compass-compiled data to share detailed information about Minnesota's Hmong population as a whole. Compass also created a demographics page for African Economic Development Solutions' website.

hmong.org/hap-impact-areas/community-demographics/

COMPASS IS LED BY WILDER RESEARCH AND GOVERNED AND FUNDED BY A COLLABORATIVE OF PARTNERS:

STAY INFORMED

FOLLOW US ON:

- FACEBOOK
- TWITTER
- LINKEDIN



SIGN UP TO RECEIVE OUR E-NEWSLETTER
[MNCOMPASS.ORG/CONTACT-US](https://mncompass.org/contact-us)

- | | | |
|--|--|-----------------------------------|
| 3Mgives | Initiative Foundation | Saint Paul & Minnesota Foundation |
| Blue Cross and Blue Shield of Minnesota Foundation | The Jay & Rose Phillips Family Foundation of Minnesota | Southwest Initiative Foundation |
| Boston Scientific | Mardag Foundation | Wells Fargo Foundation Minnesota |
| Otto Bremer Trust | McKnight Foundation | Amherst H. Wilder Foundation |
| Bush Foundation | The Minneapolis Foundation | |
| Granite Partners | Northwest Minnesota Foundation | |
| Greater Twin Cities United Way | | |

